

Figure 1. Schematic oblique view (looking west) of the East Zone showing drill intercepts (drill intercepts have been reported in Appendix 2 of this report, and in prior Newcrest exploration releases). 0.5 and 5g/t Au shell projections generated from Leapfrog model.

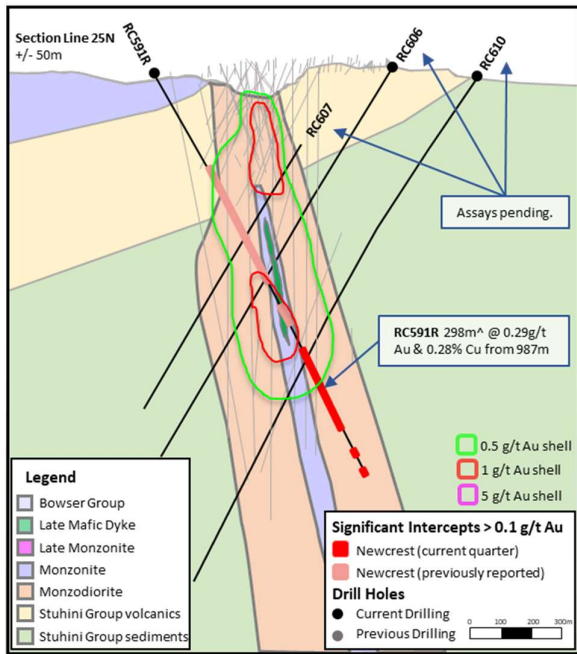


Figure 2. Schematic cross section of RC591R, RC606, RC607 and RC610 showing drill intercepts (drill intercepts have been reported in Appendix 1 of this report, and in prior Newcrest exploration releases) 0.5, 1.0 and 5g/t Au shell projections generated from Leapfrog model.

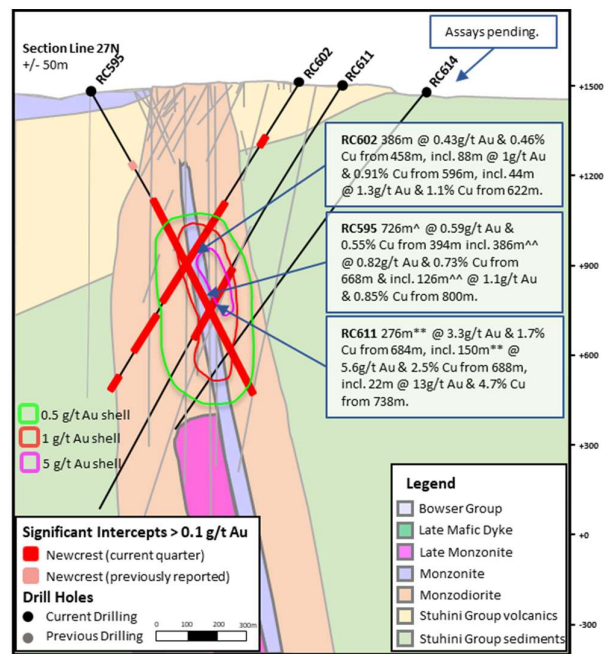


Figure 3. Schematic cross section of RC595, RC602, RC611 and RC614 showing drill intercepts (drill intercepts have been reported in Appendix 1 of this report, and in prior Newcrest exploration releases) 0.5, 1.0 and 5g/t Au shell projections generated from Leapfrog model.

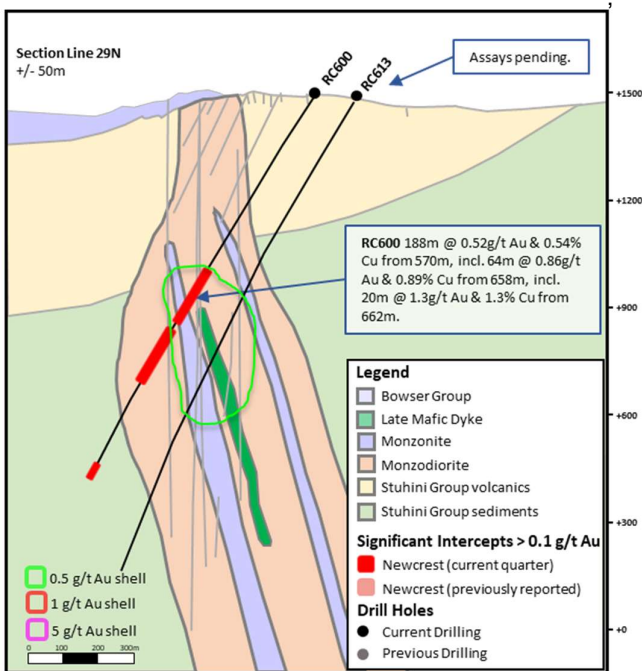


Figure 4. Schematic cross section of RC600 and RC613 showing drill intercepts (drill intercepts have been reported in Appendix 1 of this report, and in prior Newcrest exploration releases) 0.5, 1.0 and 5g/t Au shell projections generated from Leapfrog model.

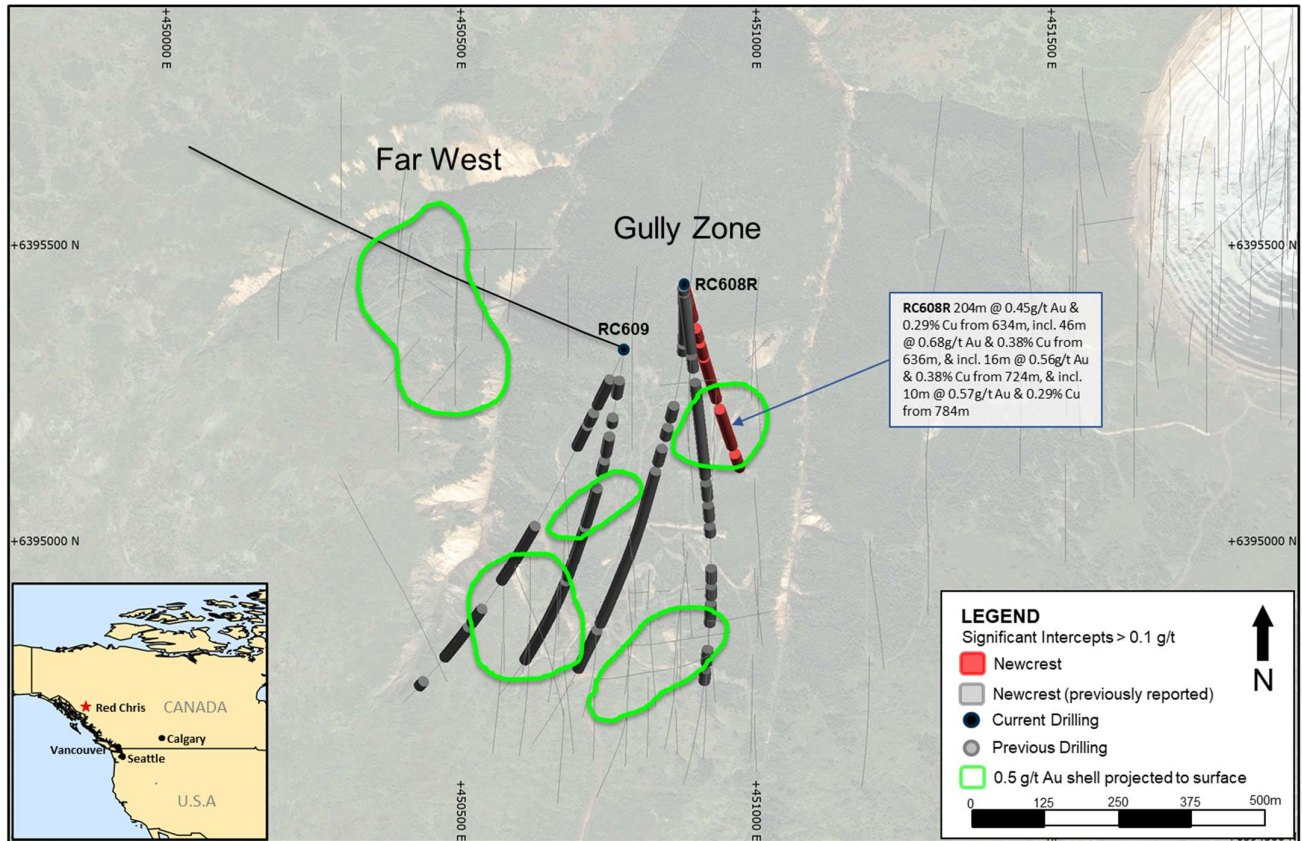


Figure 5. Schematic Plan view map of the Gully Zone, 0.5g/t Au shell projections generated from Leapfrog model.

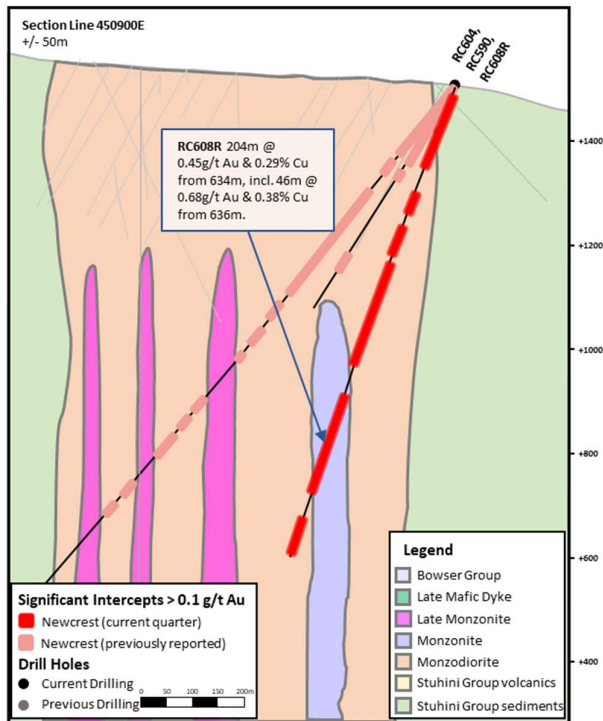


Figure 6. Schematic cross section of RC608R showing drill intercepts (drill intercepts have been reported in Appendix 1 of this report, and in prior Newcrest exploration releases).